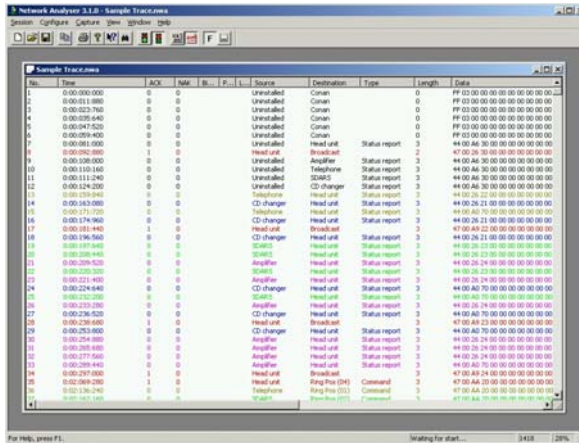


Network Analyser Kit



A powerful development, test and debug tool for D2B based multimedia network systems, allows capture of all D2B control messages from all nodes in any position of the network. It is simple and intuitive to use.

D2B messages are displayed simultaneously in Hex and Text format facilitating interpretation and automatically time-stamped by the underlying hardware with an accuracy of 10 μ s reporting any Bi-phase, loss of lock and parity errors.

The Network Analyser also performs statistical analysis and displays results in a

Key features

- Capture and log all D2B control data messages
- Precise time stamping of 10 μ s
- Reports D2B network errors
- Unlimited number of customizable message filters
- Arbitrary number of pre- and post trigger conditions
- A range of different display formats
- Simultaneously display of D2B messages in hex and text format.
- Supports multiple parallel sessions
- Compatible with Windows 95,98, ME & 2000 platforms

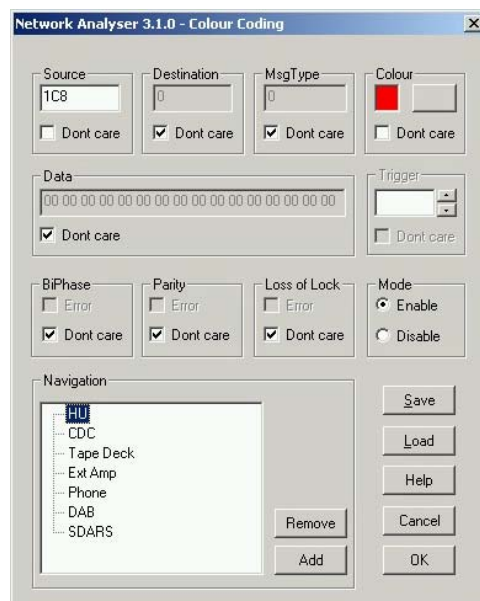
graphical format. It can display the number of captured control messages or network violations per sample period. The sampling period is user configurable. This mode can display the data in absolute numbers and as a percentage of the maximum D2B control frame rate. It can display Total Bus Load or Error Rate.

Message Filter: The Network Analyser can apply customised filters to the control messages. Exclude Filters can be applied to ignore certain messages and Include filters used to display only messages of interest.

The Network Analyser can filter messages according to the following criteria:

- Message type
- Specific message
- Source address
- Destination address
- Specific errors (bi-phase, parity, loss of lock)

Colour Coding: In order to increase the readability of the Network Analyser output, you can apply different colours to certain control messages. This allows you to display e.g. all messages from a head-unit to a CD-changer in red and all messages from the CD-changer to the head-unit in green.



Customising message colour coding

Pre- and post trigger:

Each function of the Network Analyser can be activated by pre-determined activity on the ring, allowing for analysis without the necessity of continuous monitoring. It can be set to start or stop capturing data automatically on certain ring conditions, to aid investigation of irregular fault conditions.

The Network Analyser supports multiple sessions and multiple windows thus allowing you to analyse the same data in different representations.

The Network Analyser supplies a number of features which makes it

easy to document the behaviour of a D2B network. Cut and paste, printing and exporting of control messages in various formats e.g. MS-Word, MS-Excel or MS-Access.

Control messages can be logged, allowing later analysis of different ring configurations or fault conditions.

The Network Analyser is a powerful tool to assist in the development, test and debugging of D2B based multimedia network systems.

This kit includes the protocol database output file and the necessary hardware to interface to the D2B network.

Minimum system requirements:

- ◇ IBM compatible PC with Serial Port
- ◇ Pentium® compatible CPU
- ◇ 800 x 600 screen resolution
- ◇ 256 colours
- Windows® 95/98/ME/2000 with at least 16 Mbytes of RAM

Order information:

For further information on the Cayuga Network Analyser or any other C&C Electronics products, please visit our Web site or contact our office.

C&C Electronics Web site: <http://www.candc.co.uk>

Communication & Control Electronics Limited
Sulzer Building, Westmead,
Farnborough,
Hampshire, GU14 7LP
United Kingdom
Tel: +44-1252 554444
Fax: +44-1252 554400
Email: helpdesk@candc.co.uk