

## Product Datasheet 3.1.1

### D2B Cayuga Emulators



ELECTRONICS  
The leading automotive infotainment  
networking solutions supplier



**D2B Head Unit**

#### Key features

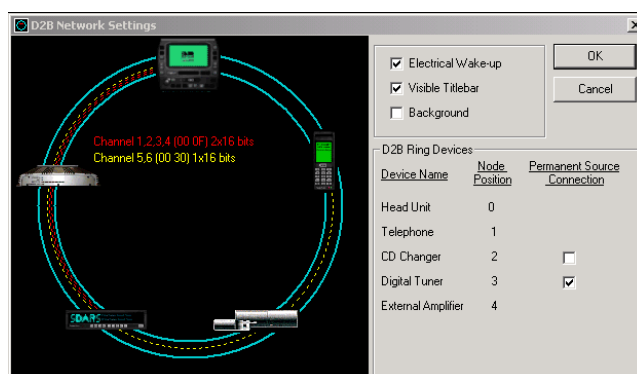
- Wide range of D2B device emulators available.
- Enables development before device hardware availability leading to shorter design times.
- PC compliant robust COM object architecture built on top of D2B Network Management module gives fully functional real time emulation.
- Facilitates engineers understanding of protocol structure and use.

The D2B Cayuga Emulators are compatible with Windows 95,98, ME & 2000 platforms and include the following devices: Head Unit, Audio Amplifier, Telephone, Digital Receiver(SDARS), MP3/Tape Player.

All device emulators are built on a stable robust and low overhead ATL-COM object architecture running on the D2B Network Management code developed with over 5 years of field-proven experience. This hierarchical software architecture communicates directly to a D2B compliant hardware board for full functional participation in a real D2B network.

D2B Application Protocols are fully compatible with IEC-61883 messaging structure.

D2B software emulators can be mixed into a D2B network with existing 'real' devices to accurately emulate a specific manufacturer's system. This degree of true-time emulation enables development of device software with a high degree of confidence so that it will be compliant with the target system.

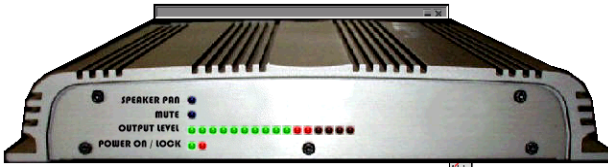


**D2B Network Settings**

The D2B Network Settings window displays the current devices, their ring order and digital source data allocation.

The intuitive graphical nature enables users to easily and quickly understand system specific architecture.

## D2B Slave Emulator Suite



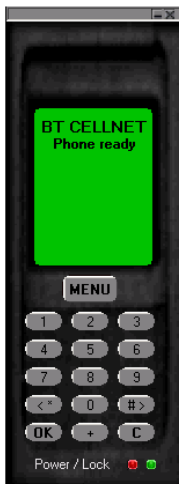
D2B Audio Amplifier emulates an external DSP amplifier device. This device is used to emulate separate digital output to rear seated passengers.



D2B Digital Receiver emulates all functionality available within the SIRIUS satellite system and has facilitated device makers' software development prior to hardware availability.



D2B MP3 player emulates a simple audio device with long data message handling for song titles etc... It works together with a freely available PC MP3 player.



D2B Telephone emulates the full AT message structure common to PDC(Japan), AMPS(USA) and GSM(Europe) mobile telephones.

Multi-party call messaging has been emulated together with an editable telephone directory.

### Available Emulators 2002

- D2B Head Unit – compatible with Audio Disc Player, Audio Amplifier, Telephone, Digital Receiver, MP3 / Tape Player
- Audio Amplifier
- Telephone
- Digital Receiver(SDARS)
- MP3 / Tape Player

#### Order information:

For further information on the D2B Training Courses or any other C&C Electronics products, please visit our Web site or contact our office.

C&C Electronics Web site: <http://www.candc.co.uk>

Communication & Control Electronics Limited  
Sulzer Building, Westmead,  
Farnborough,  
Hampshire.GU14 7LP  
United Kingdom  
Tel: +44-1252 554444  
Fax: +44-1252 554400  
Email: [helpdesk@candc.co.uk](mailto:helpdesk@candc.co.uk)